

# Rise of the AI Era: Leading on the Bionic Edge

Speaker : Rusli Zin, Project Director ZTE

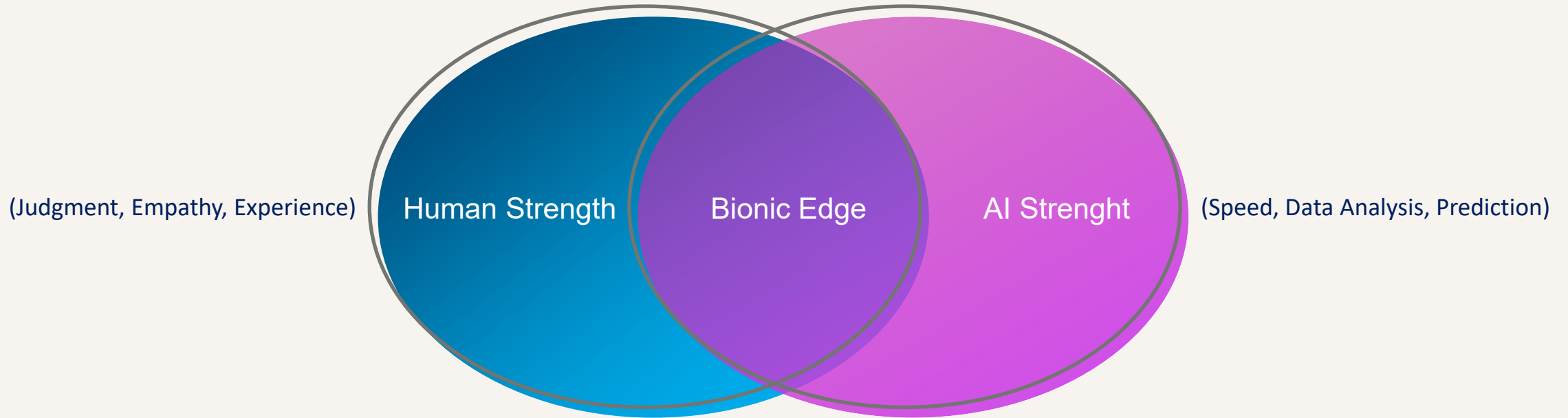


1 > The rising of project leaders now report AI integration in some part of their workflow

2 > Rising complexity and data overload = traditional methods are too slow

3 > Shift from manual planning → data-driven decision making

***Project leaders must now ask:***  
***“Where do we add value when***  
***AI handles the routine?”***



AI doesn't replace  
leaders, it augments  
them

Combine human  
judgment, empathy,  
and experience with AI-  
powered data insights

Human + Machine  
synergy = The Bionic  
Edge

Leaders evolve from task  
managers to decision  
architects



## Traditional Leadership Is Struggling in Modern Projects

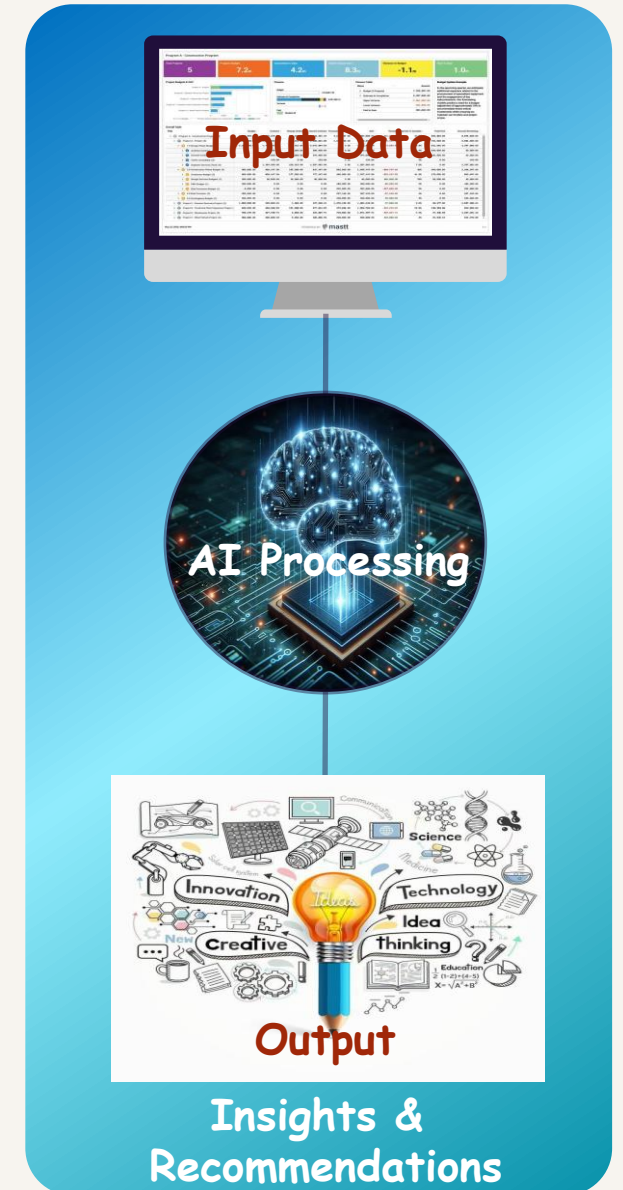
Projects face rising complexity, faster timelines, and greater uncertainty

Leaders today are overwhelmed by data, tasks, and decisions

AI isn't optional—it's becoming a necessary tool for scale and speed

AI supports leaders by enabling:

- ✓ Real-time reporting
- ✓ Risk scenario prediction
- ✓ Resource optimization
- ✓ Data-driven decision-making



## Challenges:

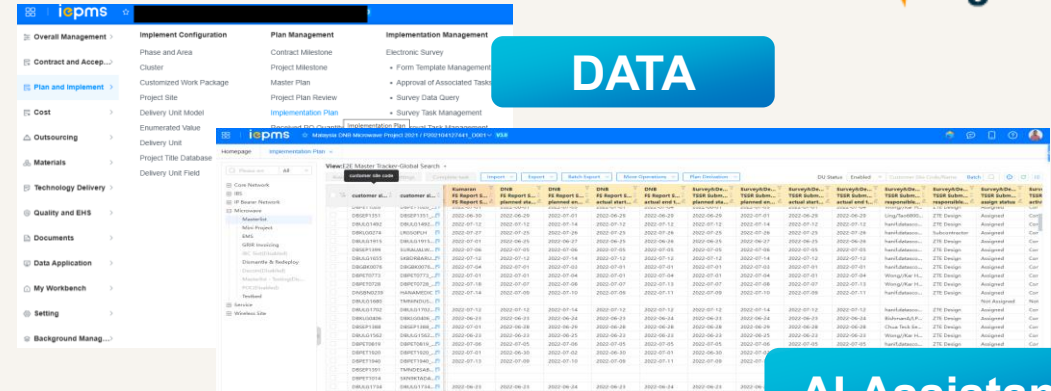
- Complex process flows (Material, Milestones, Manpower & Deadlines)

## AI-Driven Solutions:

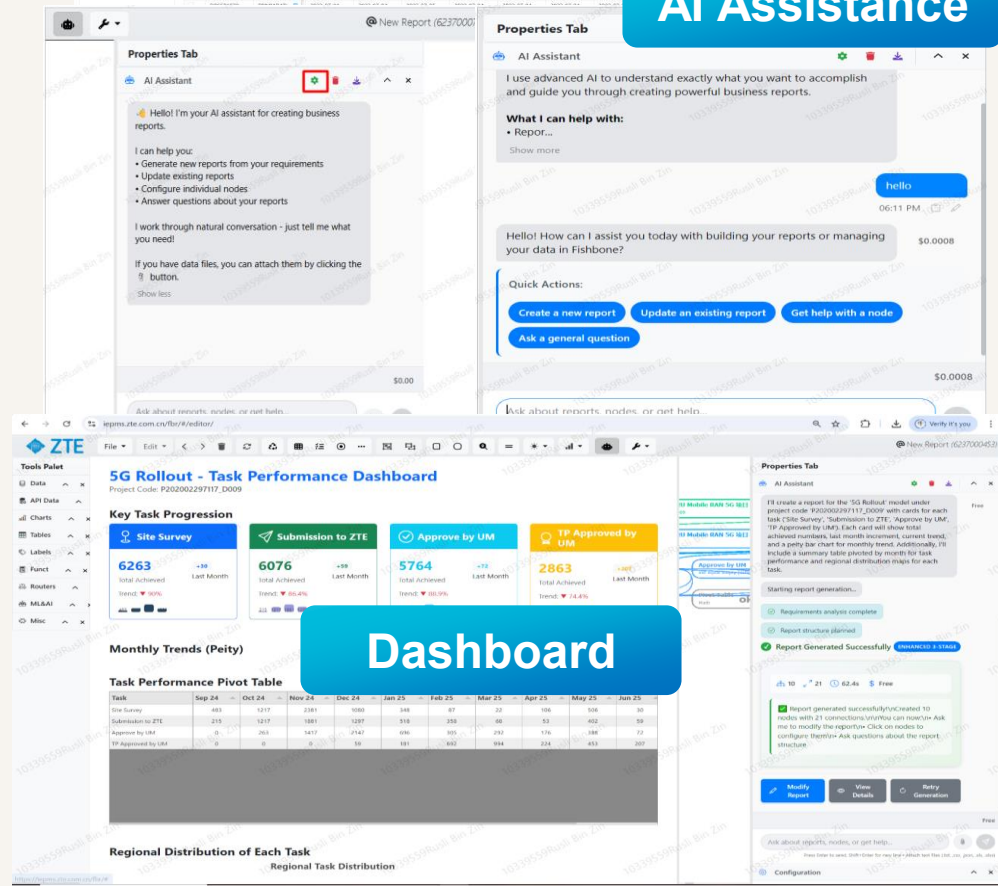
- Predictive delay warnings using schedule deviation analysis
- Manpower and resource reallocation based on AI risk clusters
- NLP-powered reporting for real-time issue summaries

## AI Impact Metrics

Area	Before AI	After AI Integration	Improvement
Schedule Delay Detection	Reactive (after delays occurred)	Predictive alerts (avg. 10 days earlier)	Proactive response improved by 35%
Issue Reporting Time	~3 hours/day manually	NLP-generated reports in 30 mins	Reporting efficiency improved by 85%
Manpower Allocation Decisions	Weekly static planning	Dynamic, AI-suggested reallocations	Response time reduced by 50%
Material Mismatch Handling	Manual verification, ~2-3 days per batch	AI-flagged anomalies within 24 hours	Inventory accuracy improved by 40%
Overall Decision-Making Cycle	Avg. 2-3 days	24-hour turnaround with AI insights	Decision speed improved by 60%



**DATA**



**AI Assistance**

**Dashboard**

Start Small.  
Focus on a Pain Point

Involve the Team  
Early

Use AI for  
Augmentation, Not  
Replacement

Celebrate Quick Wins



## AI Adoption Flow



*Identify Bottleneck*

*Pilot AI in One Use Case*

*Involve The Team*

*Measure Quick Win*

*Scale Gradually*

*Embed AI Into  
Leadership Culture*



Forcing AI Without Clear Value. People resist tools they don't see as helpful

*"One of the biggest mistakes is pushing AI tools onto teams without showing practical benefits"*

No Human Ownership of AI Outputs. "Blame the AI" mindset weakens accountability

*"Another trap is blaming the AI. Once teams start saying, 'That's what the AI recommended,' you lose accountability."*



Ignoring Change Management. Teams fear AI when it's introduced as a control tool

*"Change management is critical, leaders need to frame AI as a tool to empower, not control."*

Over-relying on AI Recommendations: Blind trust in AI can lead to poor decisions

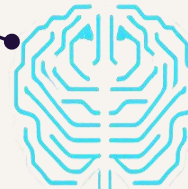
*"Critical thinking, human judgment, and cross-checks must stay in place."*





## Be an AI Translator

Connect business needs to AI solution. Bridge the gap between tech specialists and project teams. Be the translator who turns AI possibilities into practical solutions



## Lead with Trust & Transparency

Communicate AI's role clearly. AI adoption creates uncertainty. People wonder: Is AI replacing me? Will I lose control over my work?



## Shift from Directive to Adaptive Leadership

Guide using data insights, not just instructions. The leadership style of the AI era is not about issuing orders—it's about interpreting data, adapting strategies, and empowering your team to act.

## Encourage Digital Experimentation

Create a safe space for AI trials. Create an environment where your team feels safe to explore AI tools, test ideas, and even fail



**“At the Bionic Edge, leadership isn't just about managing people or technology, it's about managing the space between them.”**



## Lead AI Literacy

*Educate yourself and your team on AI fundamentals relevant to your industry.*



## Position AI as Empowerment, Not Surveillance

*Frame AI as a tool that enables people—not monitors them.*



## Model Data-Driven Leadership

*Use AI insights openly in decision-making discussions. Let the team see AI as leadership support.*



## Champion Experimentation

*Encourage small-scale AI pilots. Celebrate experiments—even when imperfect.*



## Embed AI in Strategic Conversations

*Integrate AI insights into project review, risk assessments, and roadmap planning.*



## Develop AI-Era Talent

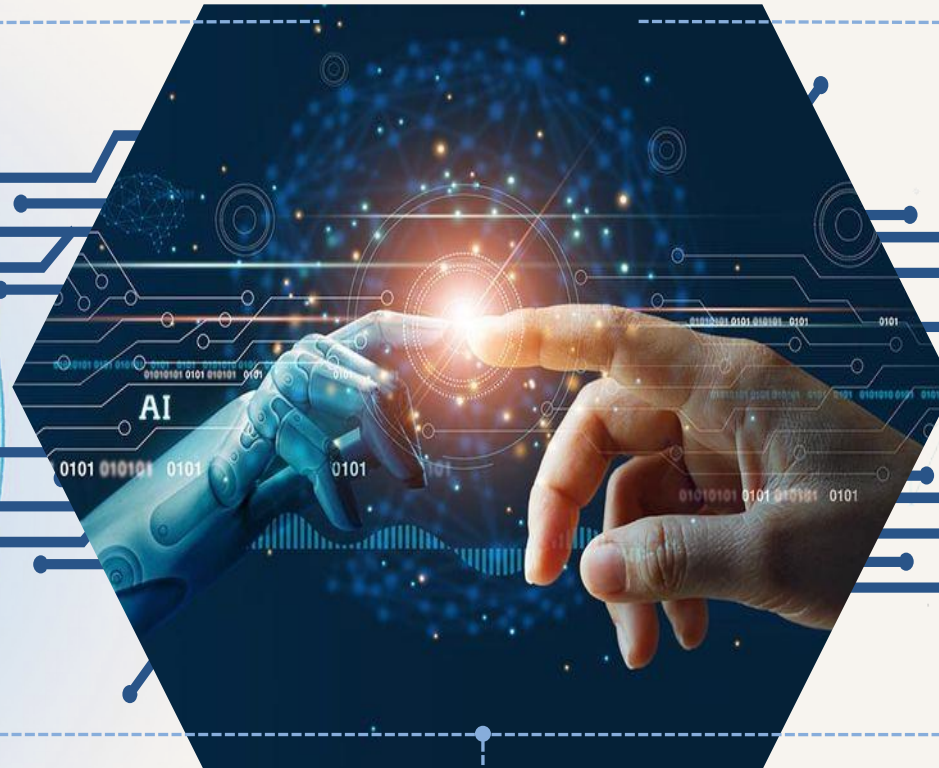
*Invest in growing team members who are comfortable working with data and AI.*

***AI is a Leadership Tool, Not Just a Technology***

Integrate AI insights into your leadership, not just your operations.

***Start Small, Learn Fast***

Focus on practical use cases and celebrate early success.



***Leadership Mindset Must Shift***

Guide through data-driven decisions and adaptive thinking.

***Your Role:***

Be the bridge between human judgment and AI-driven insights.

***Lead Smarter, Not Harder***

AI will not replace leaders. But leaders using AI effectively will outperform those who don't

# Thank You

